



# MINING

NEW POSSIBILITIES





**WELCOME!**

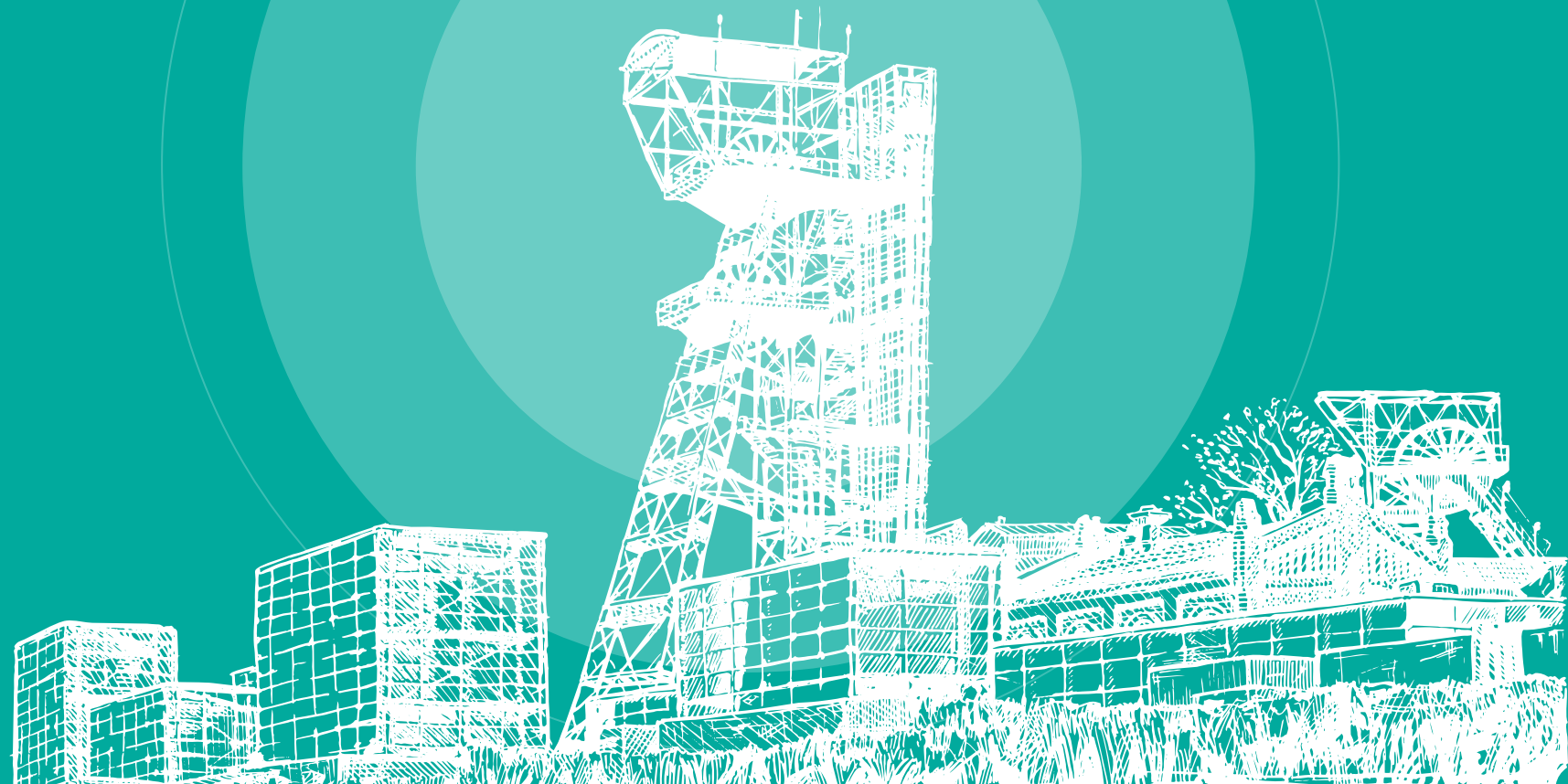
# ENERGISING

a self-reliant **INDIA**

The promise of delivering lasting benefits to a wide section of stakeholders, made Thrans India Private Limited (TIPL) start its operations with a dynamic team at the forefront. We are a young & upcoming mining development and allied services provider in the mining value chain.

Within a short period, Thrans has managed to carve a niche for itself as an emerging and responsible mining service company. TIPL's trailblazing growth has propelled us to further strengthen our product portfolio and expand our consumer profile. We deliver pioneering solutions for the energy sector requirements that are aligned with the national objective of making India a net zero coal importer through sustainable domestic coal production.

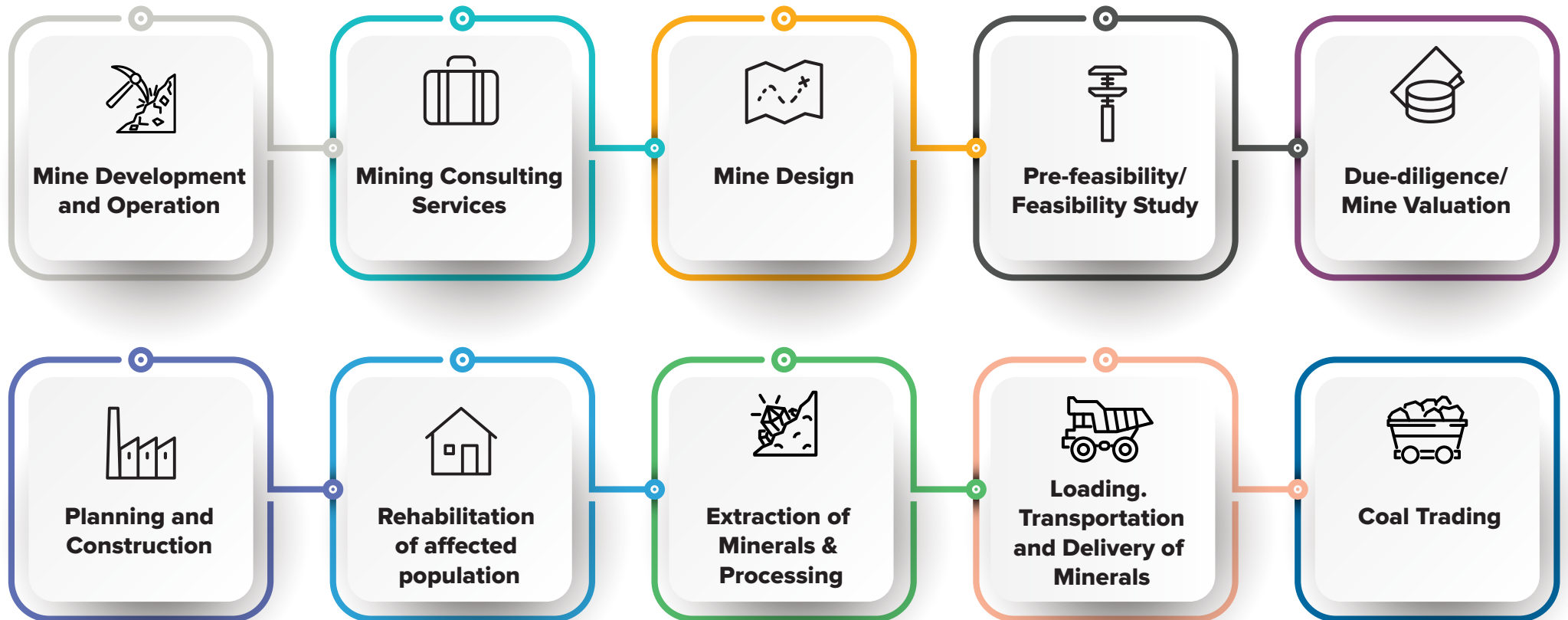




# OUR JOURNEY

of exploration

## SPECTRUM OF SERVICES





# DELVING into the **CORE**

For a sustainable future

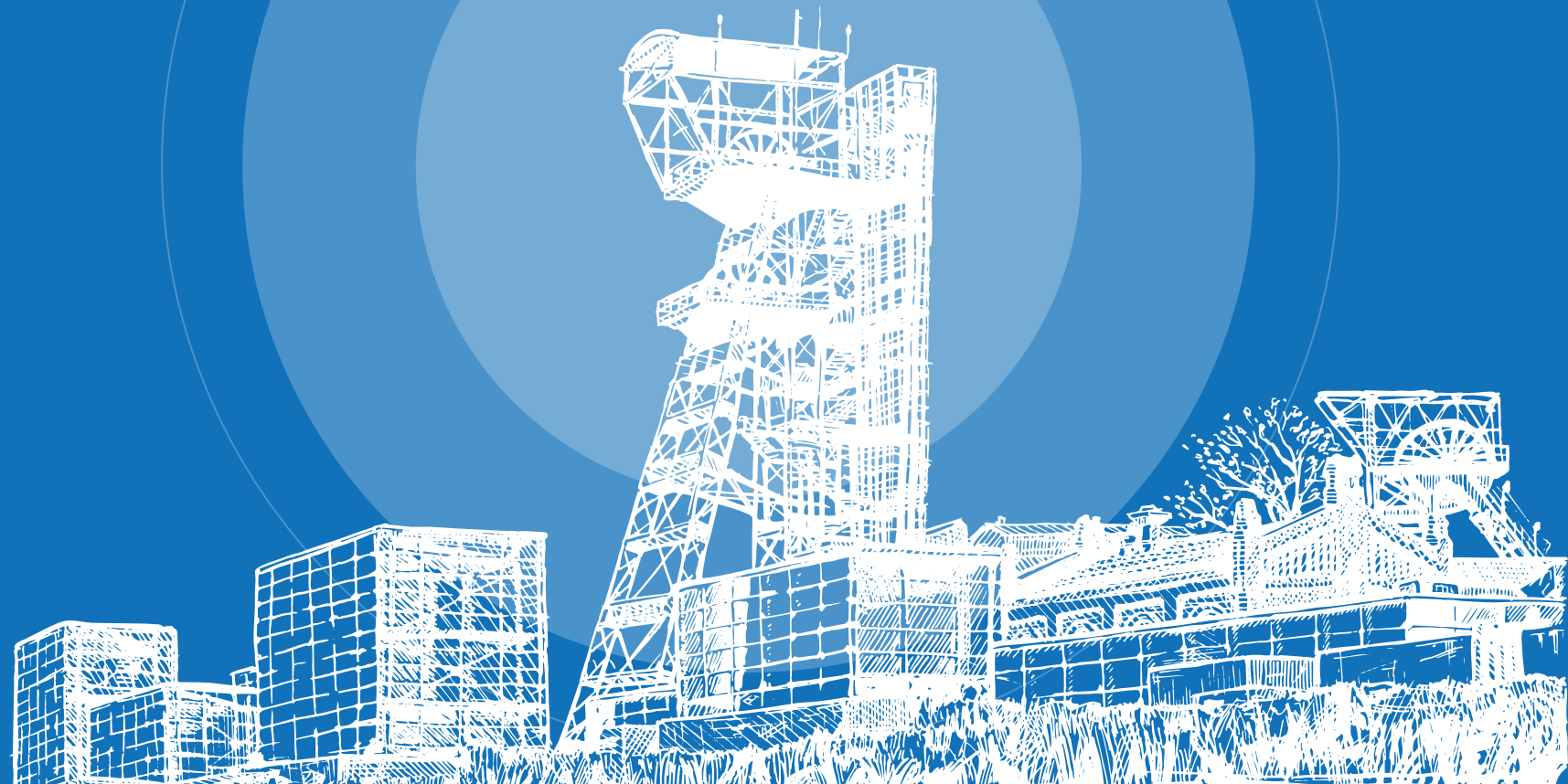
## **Vision of Thrans India**

- | We shall strive to provide our customers with the highest quality products and services in the most efficient and effective manner; to be the preferred business partner.
- | We believe in the mantra “Sabkasaath – Sabkavishwas – Sabkaprayas” with an aim to enhance the value proposition of stakeholders.
- | We shall nurture ownership & entrepreneurial culture within team members, and believe that the intelligence, genius & competence will flow out naturally

## **Our Mission**

At Thrans, our mission is to be the best bet for private & government entities in the sphere of coal mining, coal transportation, coal supply and allied services







# EXCELLENCE

is the **DEFINING**  
**FORCE**

**Mining:** In the mining sphere, we have entered into a long-term contract for executing mining & allied services at the Talabira Coal Mine, Odisha. The company achieved a new milestone by producing 10 MMT of coal from the Talabira Mine during the FY 23.

**Logistics:** The Company has ventured into logistics and taken new initiatives by delivering coal by Road and Rail to various end users such as NTPC Limited and Vedanta power plant etc. and achieved the new milestone by delivering 1.5 MMT Coal during the FY 23.

**Coal trading:** The Company procures the low to high-calorific value imported coal from key producing nations, handles at various ports in India, and delivers to business partners i.e., manufacturers, IPPs, and ISPs. During the year FY23, the Company achieved a trading of 1.5MMT of coal.





# ENERGISING the **FUTURE**

One step at a time

The energy sphere is abound with newer opportunities. Myriad growth opportunities in the Mining Development and allied services sector has made Throns India a one-point solution provider in the coal supply chain.

TIPL estimates the next 5 Years' growth at a 25% upside through participation in commercial mining bids, government tenders, and transportation business. We are also negotiating directly with various mine owners for MDO contracts.

The Company has also been working on various new strategic and business opportunities to secure its position in a competitive environment and is looking for organic as well as inorganic growth.





# OUR COAL

## Assets

### Jitpur Coal Mine Block Jharkhand

Terri Mining (a subsidiary of TIPL) has won the Jitpur Coal Mine Block with a proven reserve of 65 MMT in a commercial mining auction and subsequently entered into an MDPA agreement with the Ministry of Coal to develop, operate and produce coal to the tune of 2.5 MMT P.A.

TMPL (Terri Mining Private Limited) has been awarded the Jitpur Coal Mine/Block in October 2022 and the Mine is expected to start Coal production in FY 2027-28.

The Jitpur Coal Block is located in the Godda district of Jharkhand. The specific location of this mine is in the north-western part of the Chuperbita Basin of the Rajmahal coalfield. It produces prime coking coal from the mine and has an extractable coal reserve of 65.53 million tonnes with a peak capacity of 2.5 MTPA.





An aerial photograph of a construction site. The ground is dark and heavily marked with tire tracks from heavy machinery. In the lower right quadrant, a large, rectangular concrete structure is under construction. A yellow excavator is positioned near the structure, and a white truck is partially visible at the bottom right corner. The overall scene is industrial and active.

**THANK  
YOU!**



## **Throns Infrastructure Pvt. Ltd**

CIN: U10300GJ2017PTC095708

Registered Office & Head Office: 204, ISCON Elegence,  
S.G. Highway Service Road, Prahladnagar Satellite  
Ahmedabad - 380015, Gujarat, India

E-MAIL: [commercial@throns.in](mailto:commercial@throns.in)



[www.thronsinfrstrucuter.in](http://www.thronsinfrstrucuter.in)